
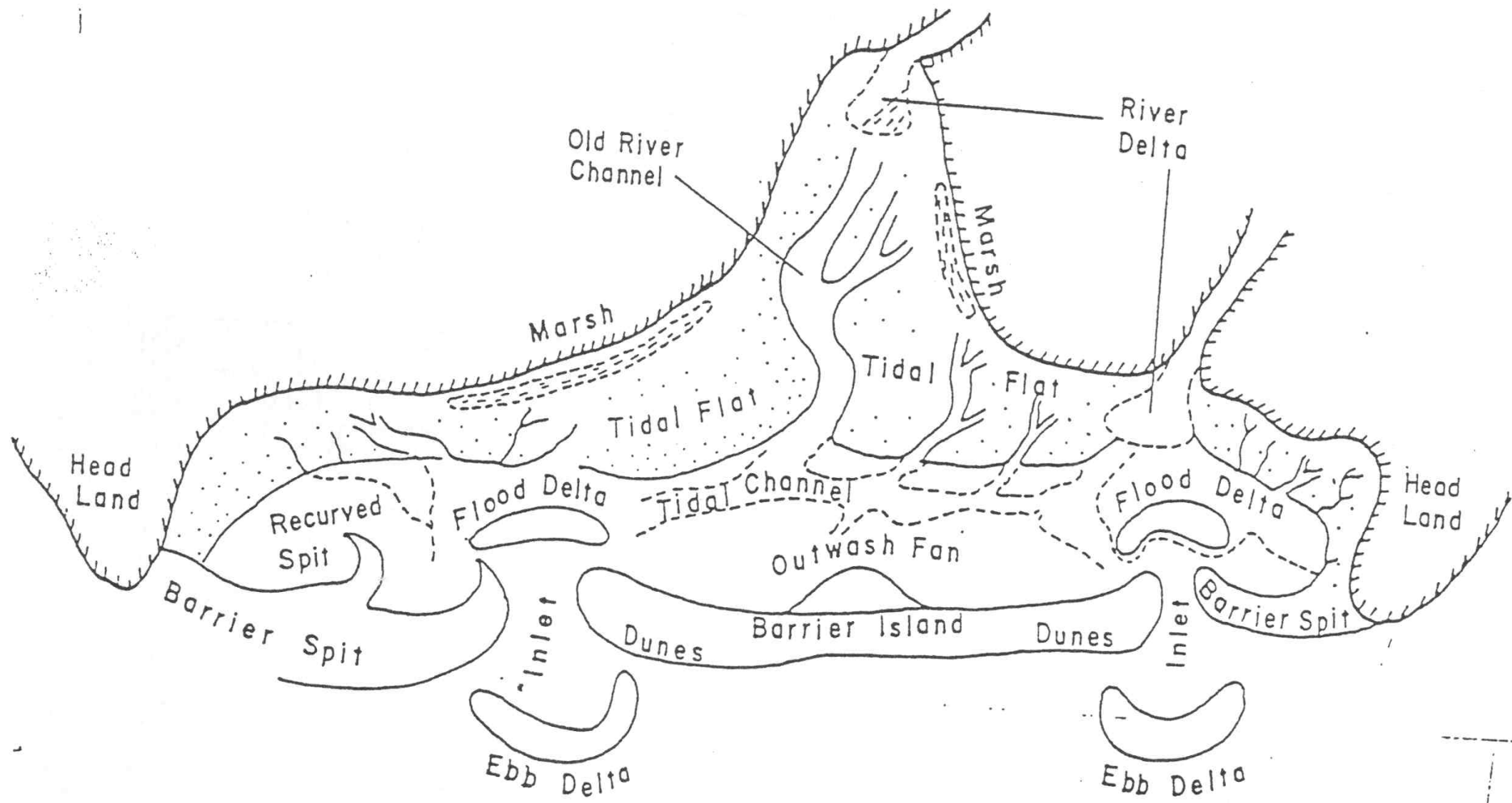
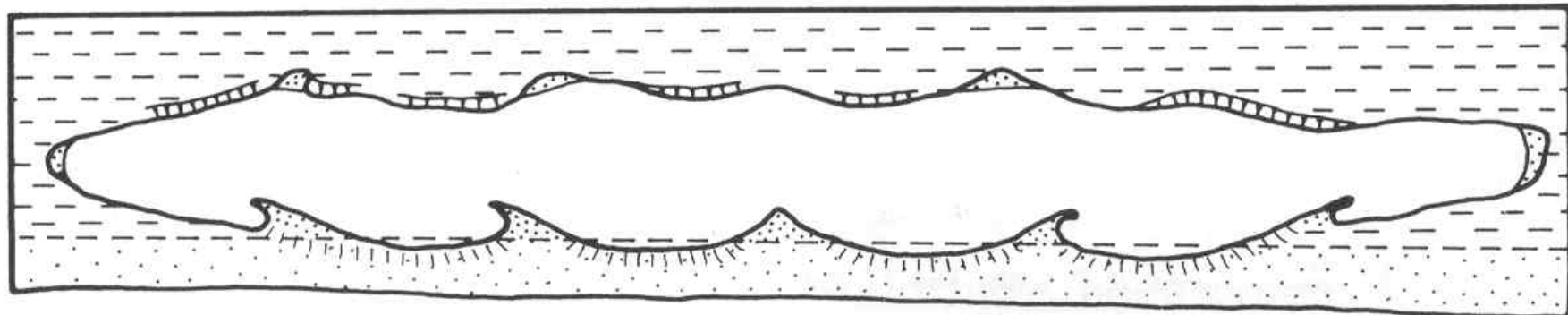
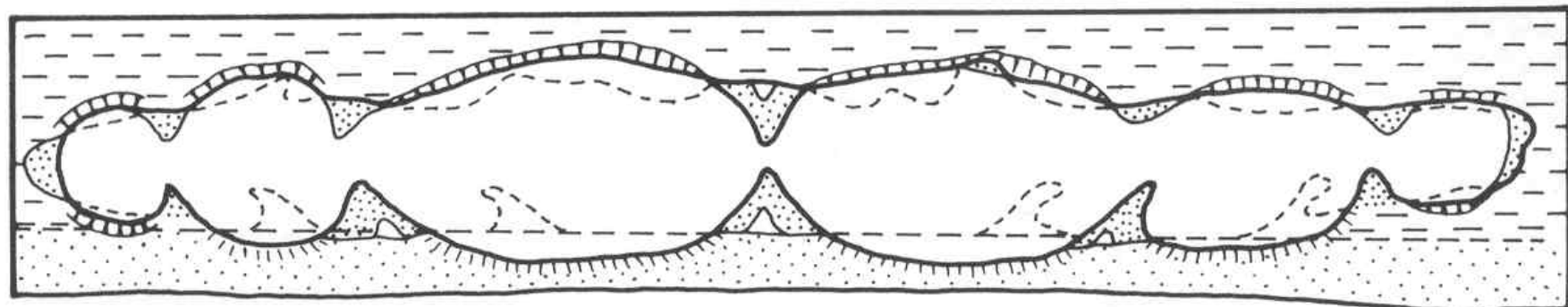
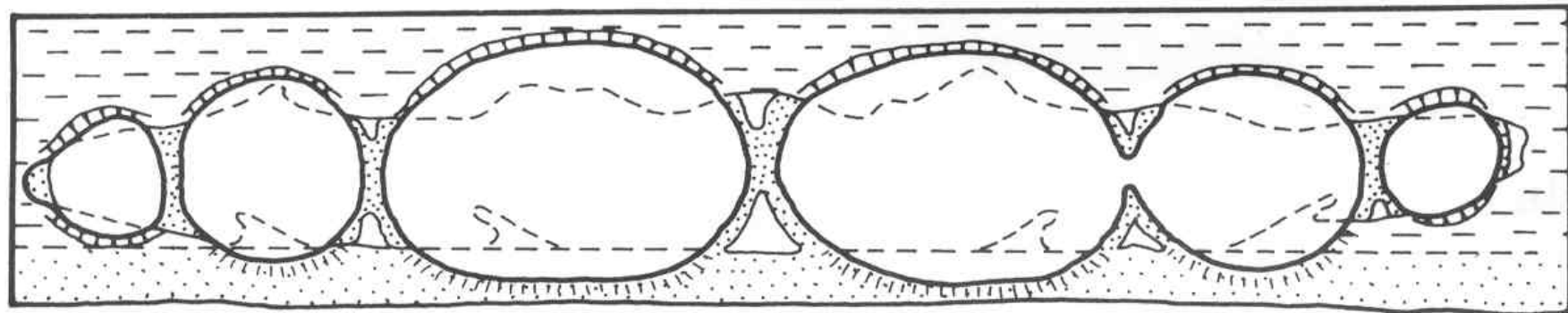


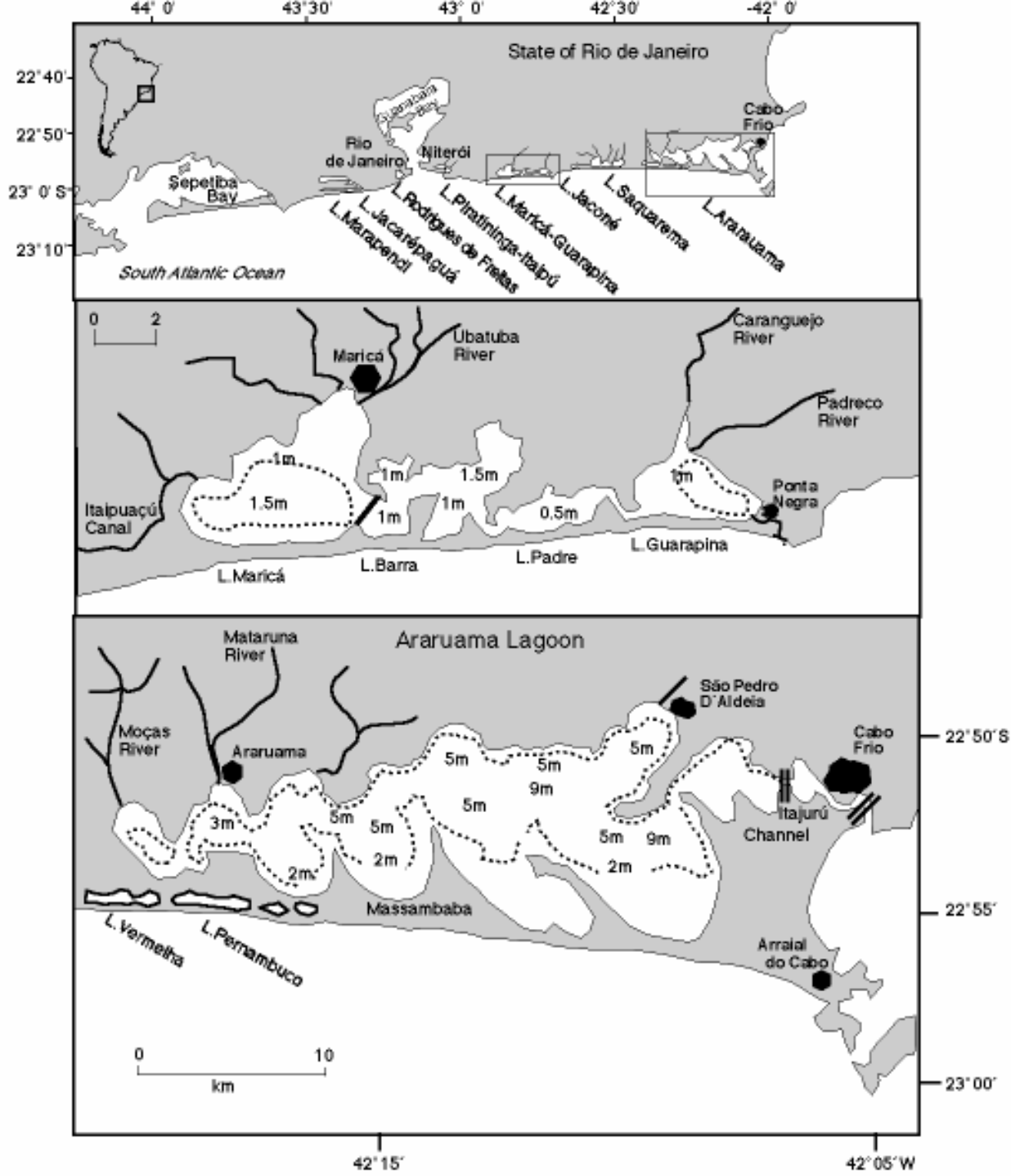
ESTUARIOS SECUNDARIOS

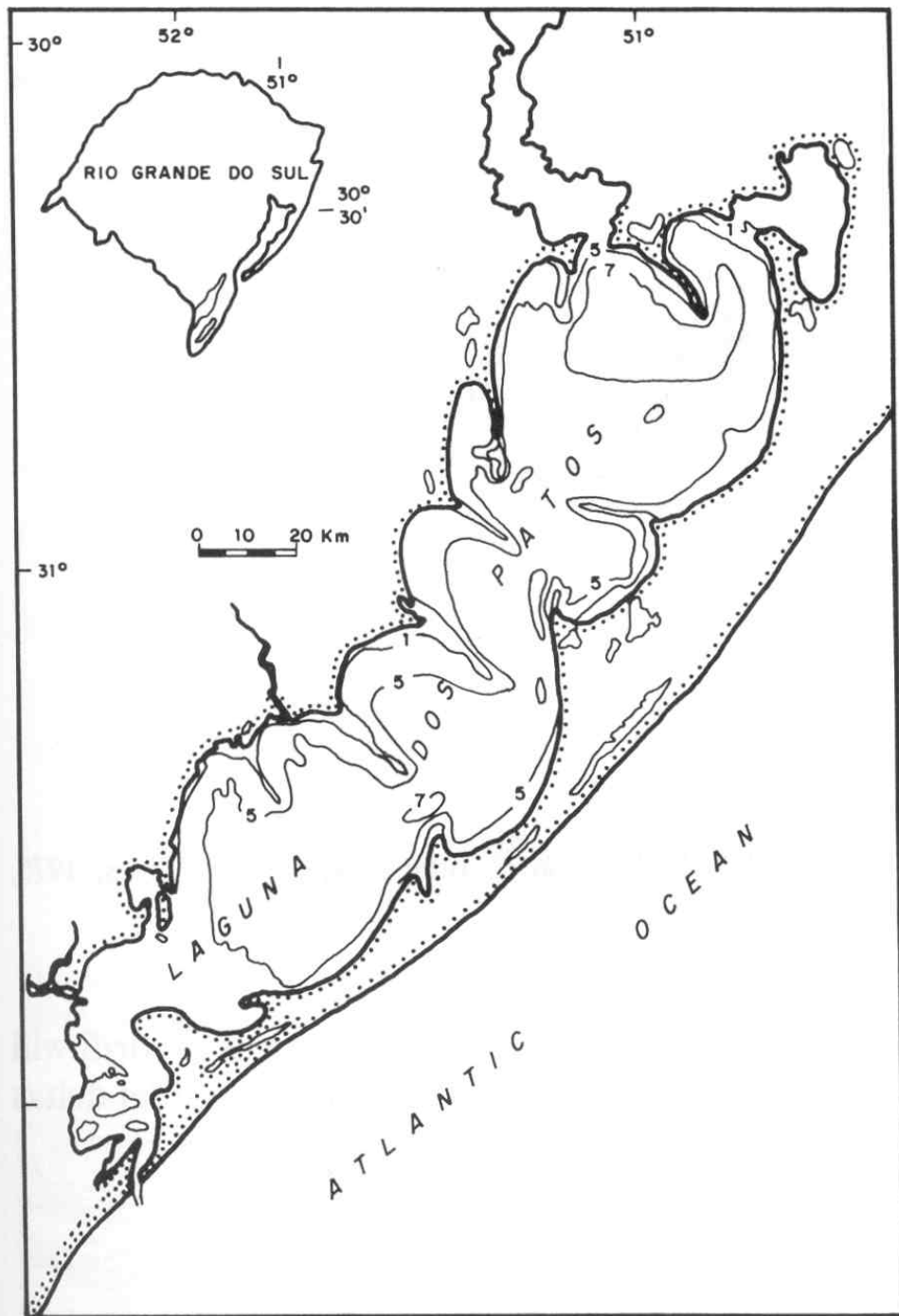
An aerial photograph of a coastal lagoon system. A river flows from the top left towards the bottom center, where it meets a large, irregularly shaped lagoon. Several smaller, interconnected ponds and channels are visible within the lagoon system. The surrounding land is a mix of green vegetation and brownish soil. The ocean is visible on the right side of the image.

LAGUNAS
COSTERAS



**A****B****C**







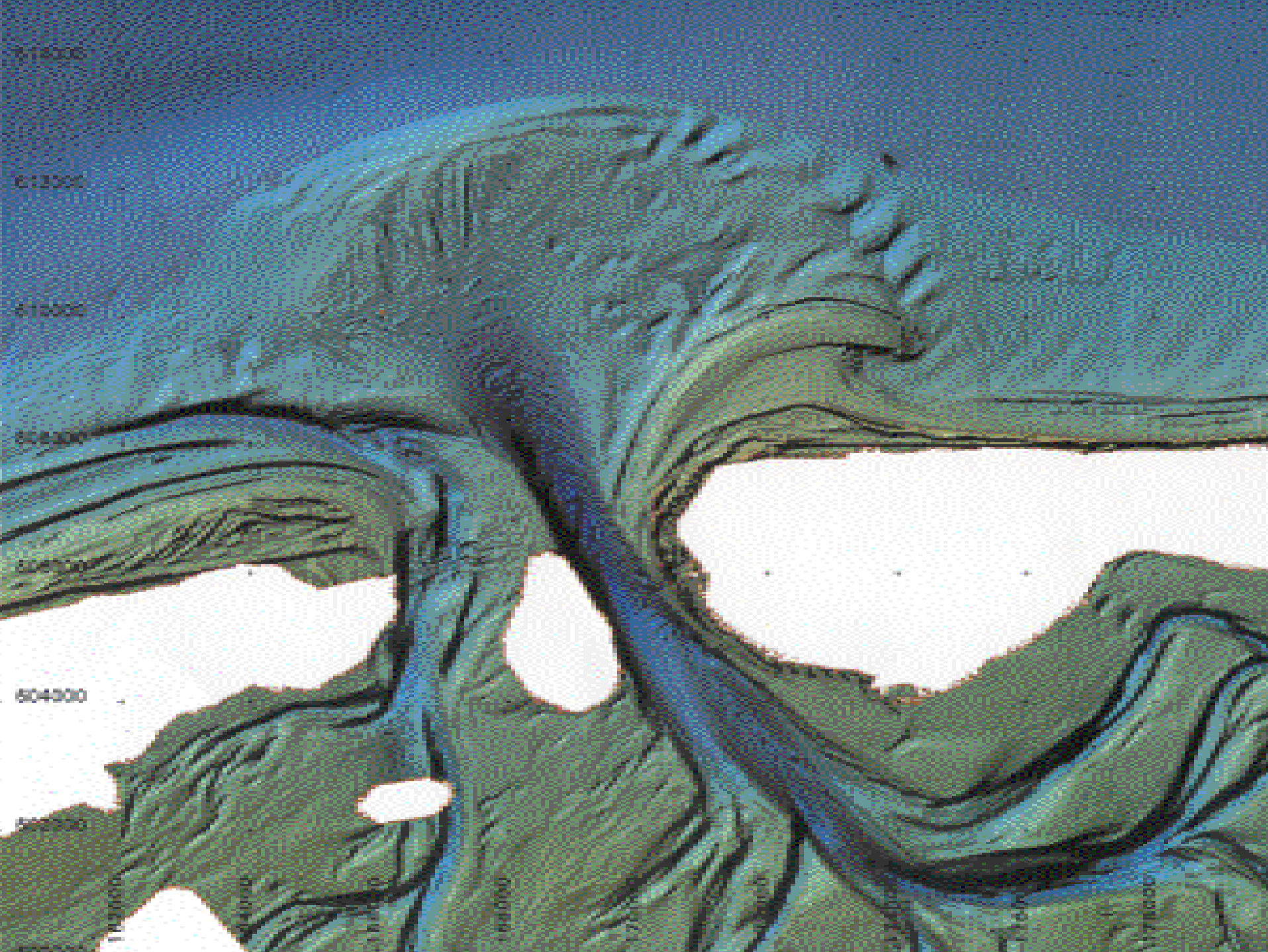


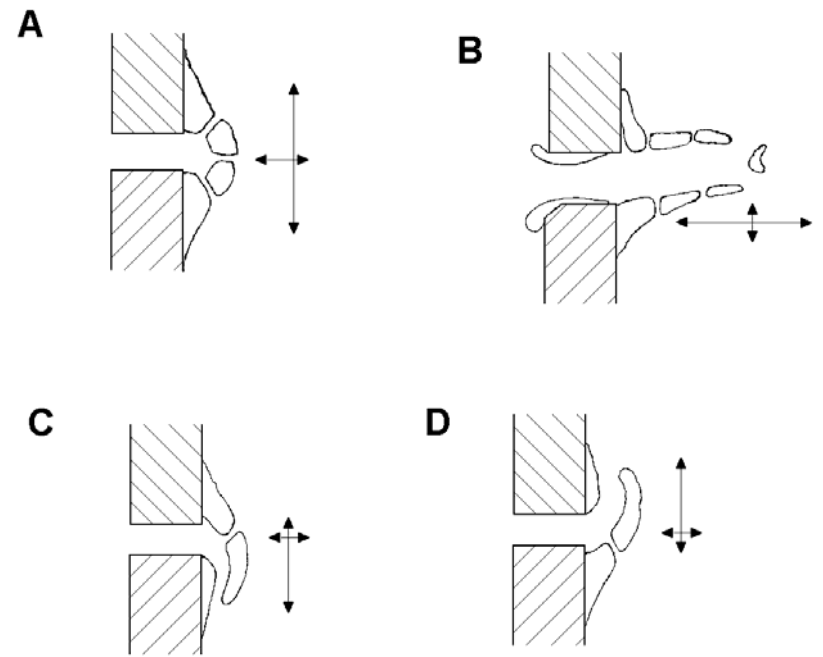
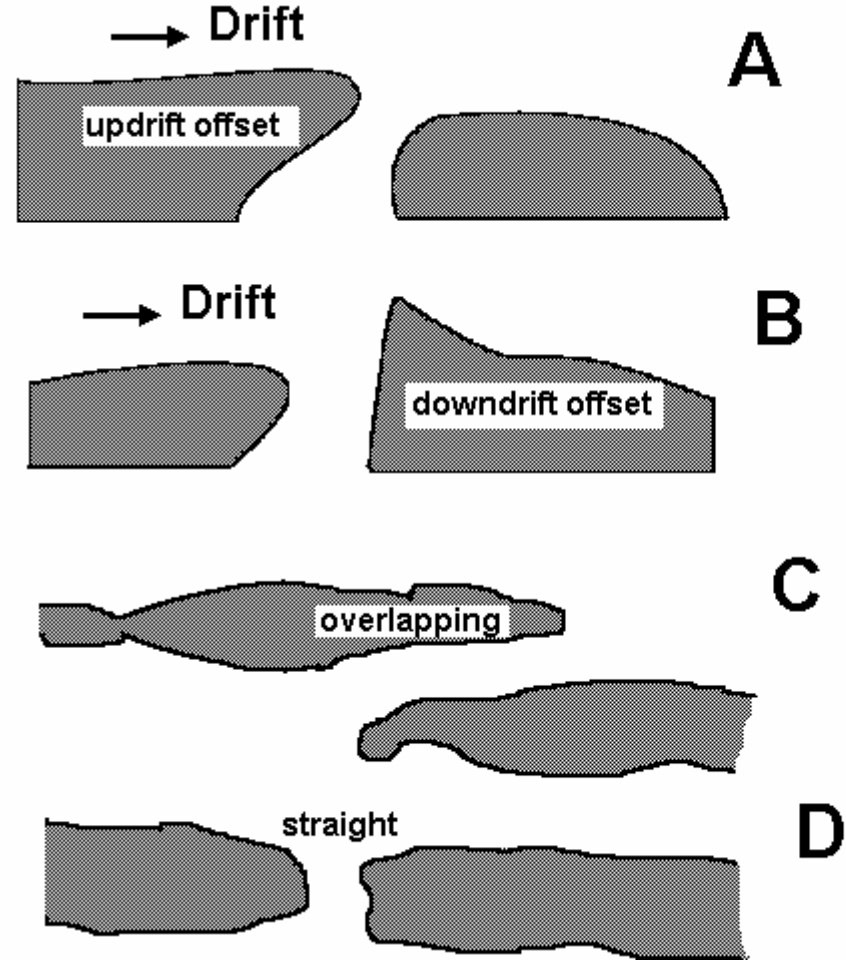
7 7:19 PM



BOCAS Y DELTAS DE MAREA







Isla - Perillo, Fig. 9.21